

red gallery

contemporary art space

2018 proposal guidelines

red gallery is a large historical warehouse space in the North Fitzroy arts precinct. The gallery was established in 2002 for the exhibition and sale of contemporary art and design. We aim to provide a friendly, professional and supportive environment to both new and established artists working in any media. red gallery is fully staffed and artists are not required to gallery-sit.

The gallery comprises three spaces which can be utilised separately, or as one total space. A ceiling height of 3.8m provides ample space for large works. Each gallery space has good natural light as well as an adjustable low voltage track lighting system.

Opening hours:

Thursday/Friday 11-6
Saturday/Sunday 12-5

Costs:

- gallery rent \$ 1680 per space for 3 weeks (plus GST)
- plus bond \$ 100 (refundable)
- commission 20% (plus GST)

Your proposal:

Exhibition proposals should include the following:

- your name, address and contact details
- visual support material with clearly labeled jpg images
- a current CV (brief) as a word document
- a statement which outlines the concepts underpinning your work
- an exhibition plan (how you intend to use the space)
- any special requirements (plinths, alterations)
- preferred gallery space and preferred dates
- any other supporting material you consider relevant

For group exhibitions, you should also include:

- one (brief) CV for each group member
- name, address and phone number of each group member
- name and phone number of one contact person.
- groups of six or more incur a 20% loading

Opening night:

- red gallery holds a limited liquor license. Drinks at opening night are available for sale to visitors. BYO is not permitted.

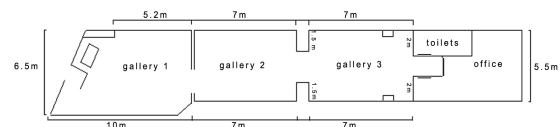
Exhibition arrangements:

- exhibitions run for three weeks
- openings are from 6-8 pm on Wednesdays
- exhibitions and openings are supervised by gallery staff.

Post, Deliver or Email:

Post/Deliver to: 157 St Georges Rd, North Fitzroy, 3068
Email to: mail@redgallery.com.au

The gallery:



The team:

Director - Kim Wall
Gallery Manager - Nick Reed

You can find us by:

- Tram 11, stop 21 just north of Edinburgh Gardens
- Melways ref: 30B12 (there is car parking in nearby streets)
- Bus 504 (Reid Street)

The fine print:

red gallery will:

- provide a listing in Art Guide, Art Almanac and on artshub.com.au
- prepare an email exhibition invitation and distribute to gallery database
- promote your exhibition on our social media platforms
- supervise the gallery and sales
- organise opening night function and provide bar staff
- provide assistance with preparation of artist/s statement
- provide installation advice
- provide basic tools and materials to return walls to their original state
- provide public liability insurance

As exhibiting artist, you are responsible for:

- installing your exhibition
- dismantling your exhibition
- printing costs and distribution of hard copy invitations (we can design this for you)
- arrangements and cost of transporting your work
- storage of your packing materials
- returning the gallery space to pre-exhibition condition on time.

Conditions:

- installation of exhibitions is on Tuesday 10-5
- dismantling of exhibitions is on Sunday evening 4-6
- all work exhibited must have been produced or curated by the exhibiting artist/s
- red gallery may not accept works that are unfinished, wet or deemed dangerous to gallery visitors
- red gallery must approve all hardcopy invitations
- you must tell us if you are represented by an agent or gallery
- bookings are only confirmed on receipt of a non-refundable deposit of **\$400** per gallery space
- the balance of gallery hire is payable 6 weeks prior to exhibition
- in order to extend audiences, red gallery may schedule functions, launches and seminars outside of exhibition hours. Such activities are supervised by gallery staff.

Important:

Information and prices while correct at the time of printing are subject to change. Please confirm details with gallery prior to applying.