

red gallery

contemporary art space

2018 proposal guidelines: red curated show

red gallery is a large historical warehouse space in the North Fitzroy arts precinct. The gallery was established in 2002 for the exhibition and sale of contemporary art and design. We aim to provide a friendly, professional and supportive environment to both new and established artists working in any media. red gallery is fully staffed and artists are not required to gallery-sit.

The gallery comprises three spaces which can be utilised separately, or as one total space. A ceiling height of 3.8m provides ample space for large works. Each gallery space has good natural light as well as an adjustable low voltage track lighting system.

Opening hours:

Thursday/Friday 11-6
Saturday/Sunday 12-5

Costs:

- gallery rent \$ 400 for 3 weeks (plus GST)
- commission 30% (plus GST)

Your proposal:

Exhibition proposals should include the following:

- your name, address and contact details
- title of the show you wish to participate in
- visual support material with clearly labeled jpg images
- a current CV (brief) as a word document
- a statement which outlines the concepts underpinning your work
- any special requirements (plinths, alterations)
- any other supporting material you consider relevant

Opening night:

- red gallery holds a limited liquor license. Drinks at opening night are available for sale to visitors. BYO is not permitted.
- due to lack of kitchen facilities and space we are unable to accommodate opening night nibbles.

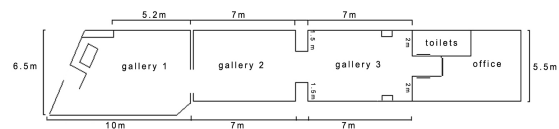
Exhibition arrangements:

- exhibitions run for three weeks
- openings are from 6-8 pm on Wednesdays
- exhibitions and openings are supervised by gallery staff

Post, Deliver or Email:

Post/Deliver to: 157 St Georges Rd, North Fitzroy, 3068
Email to: mail@redgallery.com.au

The gallery:



The team:

Director - Kim Wall
Gallery Manager - Nick Reed

You can find us by:

- Tram 11, stop 21 just north of Edinburgh Gardens
 - Melways ref: 30B12 (there is car parking in nearby streets)
 - Bus 504 (Reid Street)
-

The fine print:

red gallery will:

- provide a listing on artshub.com.au, Art Almanac and Art Guide
- prepare an email invitation and distribute to gallery database
- promote your exhibition on our social media platforms (facebook, twitter & instagram & website)
- supervise the gallery and sales
- organise opening night function and provide bar staff
- provide assistance with preparation of artist statement
- provide installation advice
- provide public liability insurance

As exhibiting artist, you are responsible for:

- arrangements and cost of transporting your work
- storage of your packing materials

Important:

Information and prices while correct at the time of printing are subject to change. Please confirm details with gallery prior to

Conditions:

- installation of the exhibition is on the Tuesday prior to opening night. Works must be delivered to the gallery by 10am
- Unsold artworks must be collected by the 6pm on the final Sunday
- all work exhibited must have been produced by the exhibiting artist
- red gallery may not accept works that are unfinished, wet or deemed dangerous to gallery visitors
- you must tell us if you are represented by an agent or gallery
- bookings are only confirmed on receipt of a non-refundable deposit of **\$100** per gallery space
- the balance of gallery hire is payable 6 weeks prior to exhibition
- in order to extend audiences, red gallery may schedule functions, launches and seminars outside of exhibition hours. Such activities are supervised by gallery staff.